

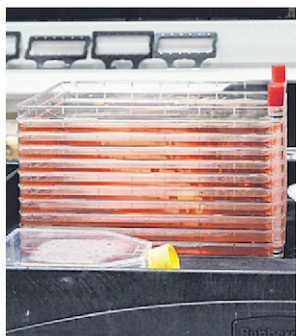
Lab-grown meat: from cell to steak

1 Live cells, such as stem cells, are extracted from animals.



2

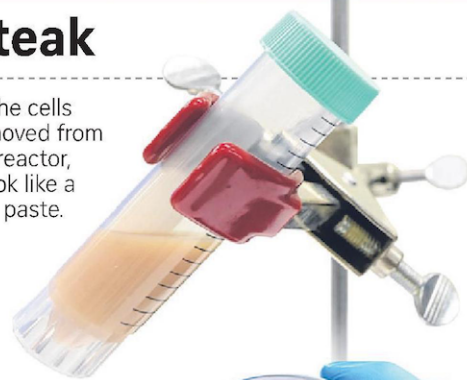
- The cells grow and multiply in a flask while being fed a solution of nutrients, also known as culture media.
- The cells settle at the base and grow in a layer.



3 The solution of cells is moved to a bioreactor, where the cells will grow rapidly in suspension, while consuming more culture media.



4 When the cells are removed from the bioreactor, they look like a pinkish paste.

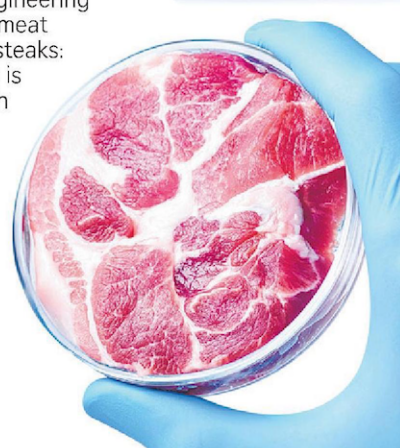


5

The paste is mixed with other food ingredients to create minced meat.



Tissue engineering to create meat cuts and steaks: The paste is mixed with food-safe scaffolds to form tissues.



Source: A*STAR PHOTOS: ALPHONSUS CHERN, REUTERS, BLOOMBERG, AFP, ISTOCKPHOTO TEXT: SHABANA BEGUM STRAITS TIMES GRAPHICS