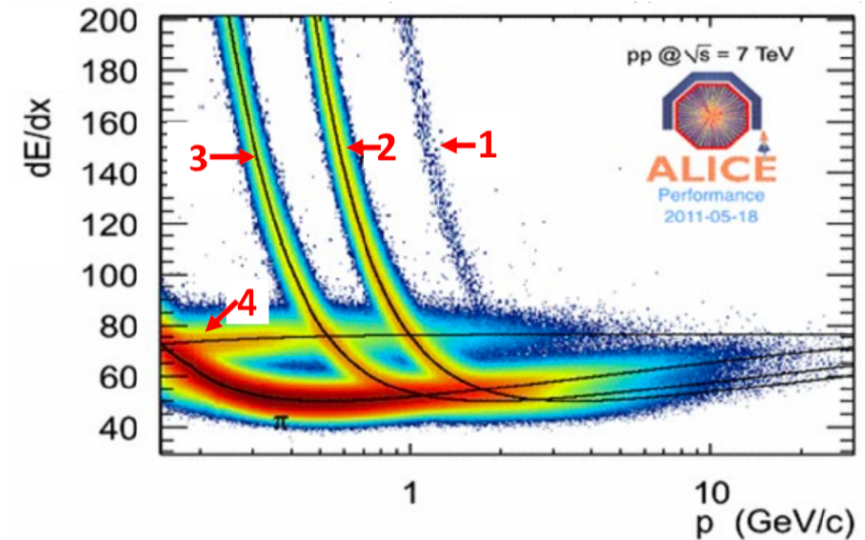


Warmup question 1

This plot shows the mean energy loss of various particles in matter. Each curve can be identified with a certain type of radiation.

Which of the following statements is correct?

- A) Curve 2 corresponds to stopping protons.
- B) Curve 4 corresponds to stopping muons.
- C) All particles in the plot are charged.
- D) The less relativistic the particles are, the less they ionize the material.



Warm - up question 2

Electrons with an energy of 100 MeV traverse a thin gold layer.
Which statements are true?

- A) The energy loss of the electrons is dominated by Bremsstrahlung.
- B) Within the layer, the ionization losses will increase linearly with the depth.
- C) Within the layer, the radiative losses will decrease exponentially with the depth.
- D) Muons with the same energy would lose similar energies in the layer.